



NEUCETHERM EPS

ETICS · EXPANDED POLYSTYRENE

- WATERPROOF
- PERMEABLE TO WATER VAPOUR
- PREVENTS CRACKS
- ENERGY SAVINGS
- FUNGICIDE PROTECTION



The External Thermal Insulation Composite System Neucetherm EPS, helps to maintain the indoor temperature of houses, providing a significant saving in the energy costs, and considerably improving the comfort inside the houses. Once it is applied in a continuous way, without interruptions in the structural areas, unlike other thermal insulation systems, Neucetherm Cork system provides a bigger reduction of the thermal bridges.

It is, therefore, a balanced Thermal and Acoustical Insulation System and is less likely to lose heat and create condensation or develop fungus and mould inside houses, near structural areas.



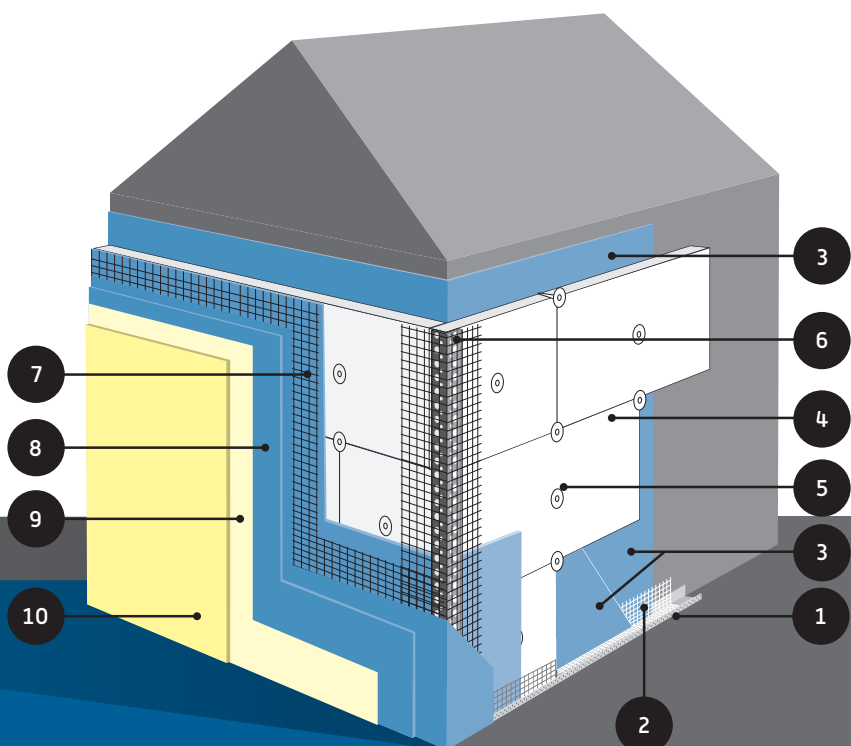
 **NEUCE**



NEUCETHERM EPS

ETICS · EXPANDED POLYSTYRENE

- 1 · Aluminium System Starter Profile.
- 2 · Neucetherm Mesh - Fibreglass mesh with anti-alkaline protection with 160g/m².
- 3 · Neuceglue 100 - Paste adhesive and coating mortar.
- 4 · Expanded polystyrene board.
- 5 · Fixing Plugs in PVC.
- 6 · Corner Profile in PVC with Fibreglass Mesh with Anti-alkaline Protection.
- 7 · Application of one layer of Neuceglue 100, inserting immediately the mesh Neucetherm Normal Mesh pressing it into the mortar Neuceglue 100.
- 8 · Neuceglue 100 - Paste adhesive and coating mortar [2nd coat].
- 9 · Neucetherm Primer.
- 10 · Final coating with Neucedecor (Extra-fine, Fine, Intermediate, Medium, Coarse, ARD and ARD 1.0mm), Neucetex or Neucegold.



NEUCETHERM EPS SYSTEM ADVANTAGES:

- Decrease of exterior walls thickness, providing an increase in the living area.
- Reduction of the walls weight and the permanent charges over the structure.
- Improves the walls waterproofing.
- Waterproof to rain water, but permeable to water vapour.
- Increases the facades lasting protecting them from the climatic and atmospheric agents action (Thermal and acoustical shocks, liquid water, UV radiation, etc ...)
- Simple to apply.
- Possibility of mutation concerning the facades aspect and application during working without disturbing the occupants, which makes this insulation system particularly appropriated for the rehabilitation of damaged facades.
- Covers or reduces the risk of cracks in exterior walls.
- Continuous application system, without interruptions in the structural areas, as a consequence a reduction of the thermal bridges.
- Inside houses temperature more stable.
- Cost-cutting with the warming and cooling of houses.
- Decreases the risk of condensation and development of fungus inside houses.
- As it is applied by the exterior, doesn't imply a reduction of the inside areas of houses.
- Large variety of finish colours and textures.



NEUCE PORTUGAL

Rua Joaquim Francisco Rocha
Apartado 4514
3701-902 Romariz
T: (+351) 256 840 040/1
F: (+351) 256 840 049
neuce@neuce.pt

NEUCE ANGOLA

Pólo Industrial de Viana
Estrada Viana- Zango
Apartado nº 34 Viana
T: (+244) 222 013 820
F: (+244) 222 013 821
neuceangola@neuce.pt

NEUCE MOZAMBIQUE

Av. das Indústrias
Parcela 771, Armazém 3
Machava
T: (+258) 843 160 070/1
F: (+258) 217 52 840
neuce.mz@neuce.com

NEUCE CAPE VERDE

Achada Grande Trás
CP 291 Praia
Ilha de Santiago
T: (+238) 263 22 22
F: (+238) 263 54 23
neuce.cv@neuce.pt

NEUCE GHANA

Free Zone Enclave
Vehrad Free Zone Heavy
Industrial Plot
Dahwenya Road - Tema
T: (+233) 576 437 042
neuce.ghana@neuce.com

NEUCE IVORY COAST

Rue de l'Industrie
Abidjan
T: (+225) 212 46 696
cote.ivoire@neuce.com